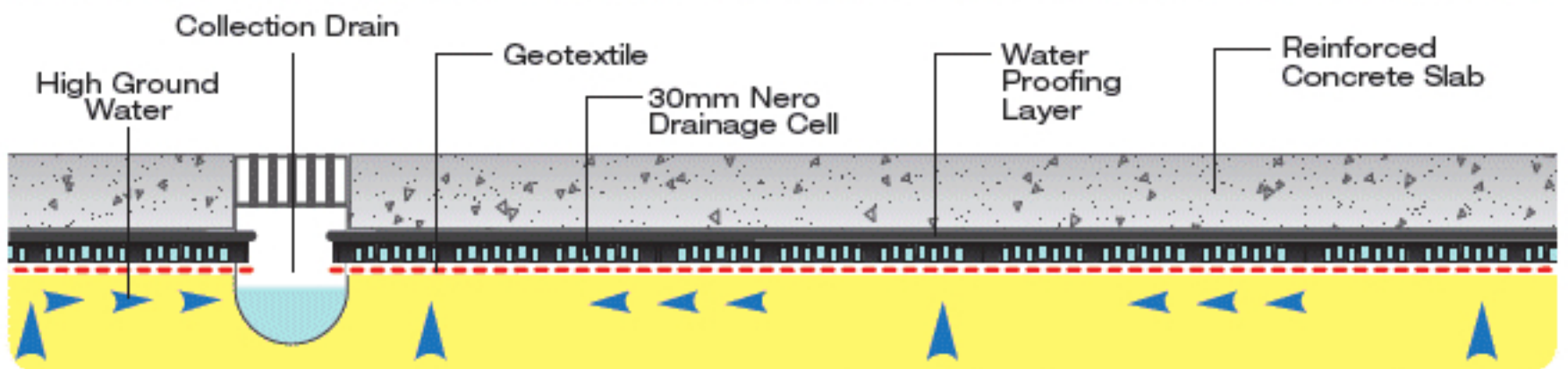
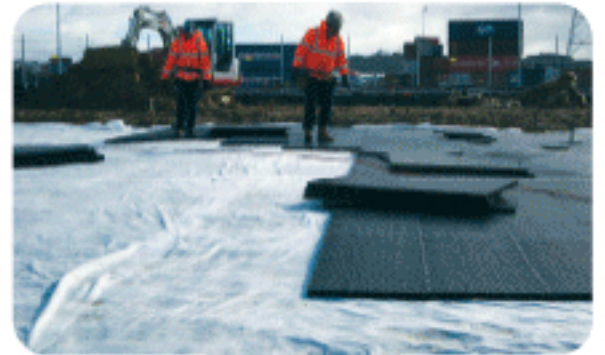
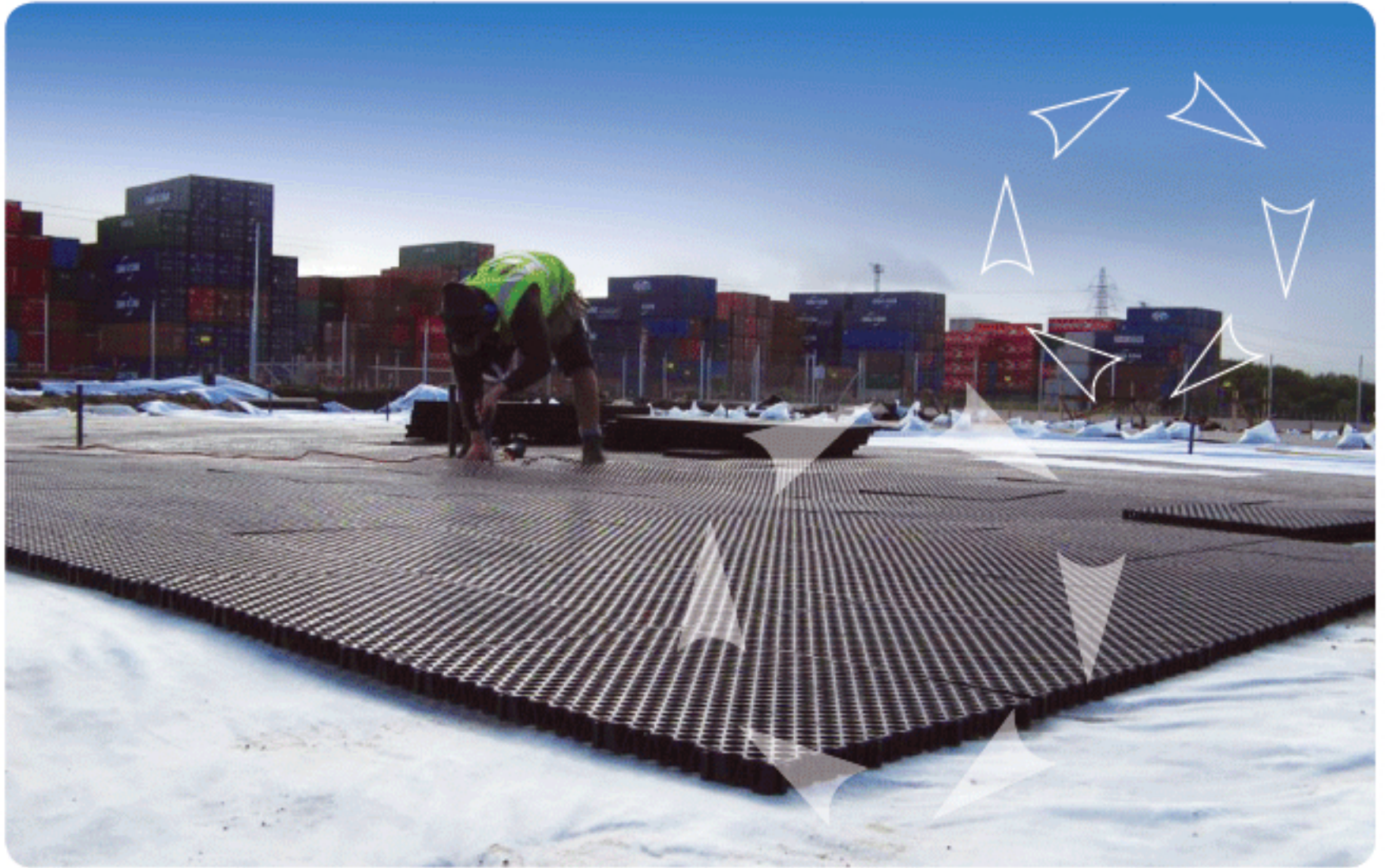


# NERO CELL APPLICATIONS

## UNDERDRAIN FOR HIGH GROUND WATER TABLE



Rainsmart 30mm & 50mm Drainage Cells are very commonly used as an underdrain, to capture and discharge rising ground water and eliminating any hydrostatic pressure build-up.

The high load bearing capacity and a 95% internal void surface ratio makes it an ideal solution for parking lots, roads, and building foundations affected by high groundwater.

Nero Cell is also commonly used as a capillary break in saline environments in (i.e. reclaimed land), salt water rising through capillary action in root zones can destroy gardens. Void created by a layer of Nero Cell eliminates the rising capillary action and protects the sweet soil and root zone above it.